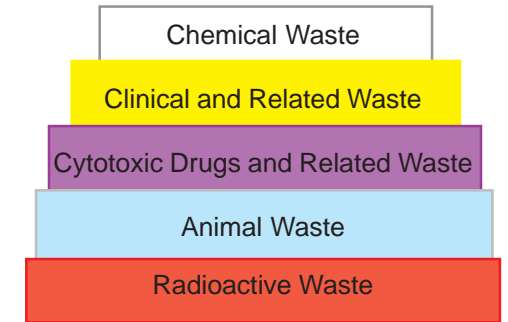


Environmental Management System (EMS) Guide to Laboratory Waste Disposal



Tip ...
 Note down your waste disposal methods at the same time as your risk assessment details.

Are the contents of the waste known?

No

Refer to EMS Website or talk to your Supervisor.

Website: www.pf.uq.edu.au/ems.html

Yes

Is the chemical or waste dangerous to handle in its current state?

Consider:

1. Will it react violently if in contact with air, water or moisture?
2. Will it explode/react if dropped?
3. Is the current packaging damaged?

Yes

No

There is no defined procedure for these types of waste. Each waste must be addressed on an individual basis.

- ◆ Refer to: <http://hazsafety.pf.uq.edu.au/chemwaste/index.html> and/or
- ◆ Consult MSDS information for this chemical waste.
- ◆ Follow MSDS directions for correct disposal of waste.
- ◆ In addition to any other information given in MSDS, waste must also be handled as follows:
 1. Packaging labelled with appropriate dangerous goods diamond.
 2. Contents and concentration listed.
 3. Name of person and generating department listed.

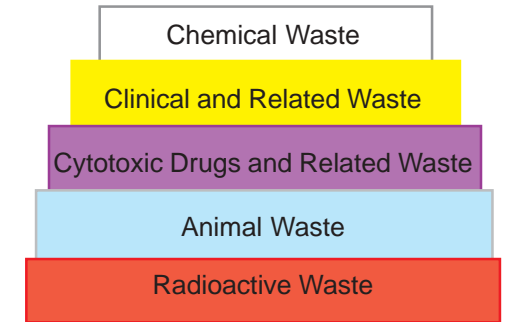
For further information, email Chemical Store Manager at chemwaste@uq.edu.au.

Select from the waste categories on Page 2:

- ◆ Chemical Waste
- ◆ Clinical and Related Waste
- ◆ Cytotoxic Drugs and Related Waste
- ◆ Animal Waste
- ◆ Radioactive Waste

For General Waste and Recycling procedures - refer to website above.

Environmental Management System (EMS) Guide to Laboratory Waste Disposal



Waste Streams

Chemical Waste

Any waste of a chemical nature that has the potential to pose a chemical threat to health, safety and/or the environment, or is chemically hazardous.

Scope:

- ◆ Sewerable chemicals
- ◆ Inert solids
- ◆ Collection of non-sewerable liquid wastes
- ◆ Collection of non-sewerable solid wastes
- ◆ Labelling chemical wastes
- ◆ Waste Manifests
- ◆ Collection procedures
- ◆ Common wastes in the work area.

Clinical and Related Waste

Waste of an infectious or contaminated nature. Pathological substances are substances that act as a source, host or carrier of disease.

Scope:

- ◆ Clinical wastes
- ◆ Any disposable laboratory consumables that may have been contaminated by Clinical wastes
- ◆ Sharps
- ◆ Pharmaceuticals
- ◆ Fixed tissue and histology sections
- ◆ Animal carcasses and cage linings only if they are infectious or contaminated
- ◆ Infectious or contaminated faeces.

Cytotoxic Drugs and Related Waste

Cytotoxic waste is material that is, or may be, contaminated with a cytotoxic drug during the preparation, transport or administration of chemotherapy. Cytotoxic drugs are toxic compounds known to have carcinogenic, mutagenic and/or teratogenic potential.

Scope:

- ◆ Cytotoxic drugs and related waste
- ◆ Any disposable laboratory consumables that may have become contaminated
- ◆ Contaminated sharps and pharmaceuticals
- ◆ Animal carcasses and cage linings only if they are contaminated.

Animal Waste

Waste of a biological nature which has the potential to cause harm by acting as a pathological waste while undergoing decomposition.

Scope:

- ◆ Animal carcasses, limbs and tissue that are not infectious or contaminated.
- ◆ Used animal litter and foodstuffs that are not infectious or contaminated.
- ◆ Faeces that is not infectious or contaminated.

Radioactive Waste

Wastes which because of their radioactive content may require specific management arrangement.

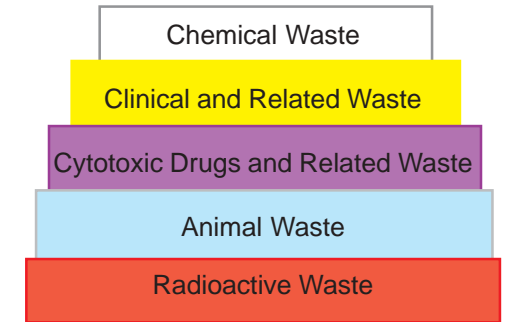
Scope:

- ◆ Solvent-based liquid scintillants
- ◆ Water-based liquid scintillants
- ◆ Radioactive glass and vials
- ◆ Dry materials (including contaminated clothing)
- ◆ Chemical reagents.

Tip

Note down your waste disposal methods at the same time as your risk assessment details.

Environmental Management System (EMS) Guide to Laboratory Waste Disposal



Chemical Waste

Is it liquid?

Yes

No

Is it sewerable?

Check with BCC Guidelines at:
<http://hazsafety.pf.uq.edu.au/chemwaste/index.html>
and/or check with your Supervisor
and/or risk assessment details

Yes

No

Is it sewerable?

Check with BCC Guidelines at:
<http://hazsafety.pf.uq.edu.au/chemwaste/index.html>
and/or check with your Supervisor
and/or risk assessment details

Yes

No

- ◆ Dispose of sewerable waste down chemical sinks.
- ◆ Flush with sufficient water to ensure no trace of chemical remains (leave tap on for 1-2 mins minimum).
- ◆ Ensure sufficient dilution.
- ◆ Rinse and deface chemical winchesters and place in marked brown waste bin which goes out as general waste.

Specific examples

- ◆ Email University Chemical Store to request containers at chemwaste@uq.edu.au.
- ◆ Check container has appropriate label printed and attached.
- ◆ Ensure only one 'individually generated' waste is placed in each container.
- ◆ **Print in pencil** on the label:
 1. Concentration of each ingredient.
 2. Generator's name, phone number and department.
 3. Storage and handling obligations.
 4. Date.
- ◆ Email the Chemical Store to arrange collection of waste at: chemwaste@uq.edu.au.

Specific Examples

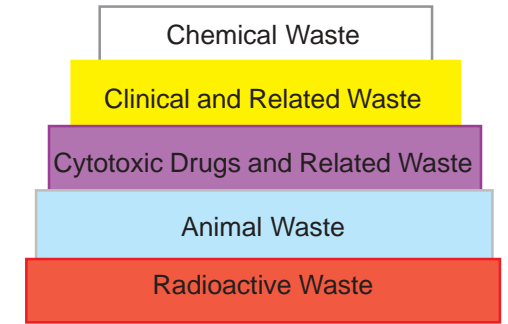
- ◆ Dispose of sewerable waste down chemical sinks.
- ◆ Flush with sufficient water to ensure no trace of chemical remains (leave tap on for 1-2 mins minimum).
- ◆ Ensure sufficient dilution.
- ◆ Rinse and deface chemical winchesters and place in marked brown waste bin which goes out as general waste.

Specific examples

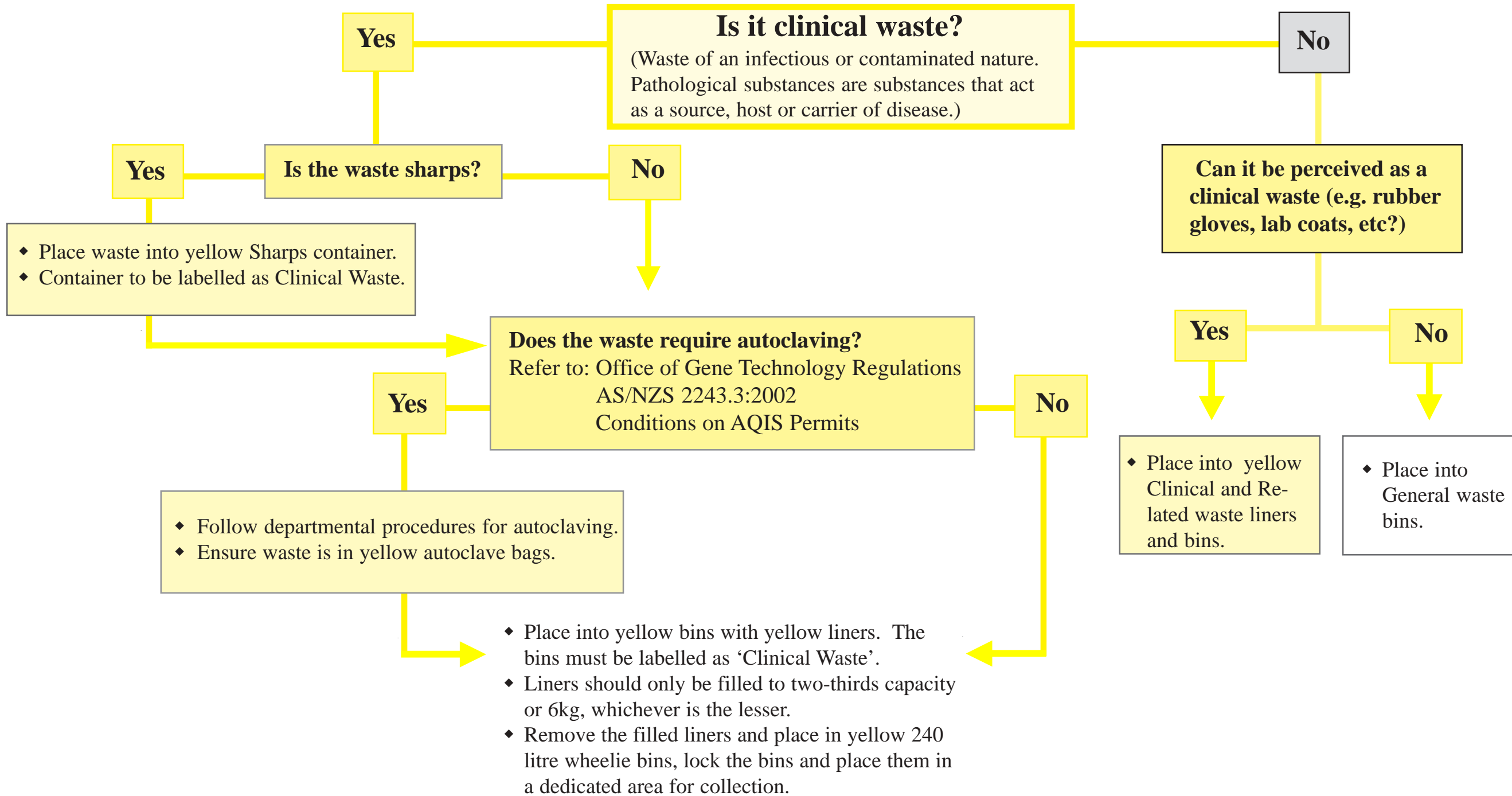
- ◆ Package waste in appropriate and suitable container.
- ◆ All packaging should be labelled with:
 1. Concentration of each ingredient.
 2. Generator's name, phone number and department.
 3. Storage and handling obligations.
 4. Date.
- ◆ Email University Chemical Store to arrange collection of waste at: chemwaste@uq.edu.au.

Specific examples

Environmental Management System (EMS)
Guide to Laboratory Waste Disposal

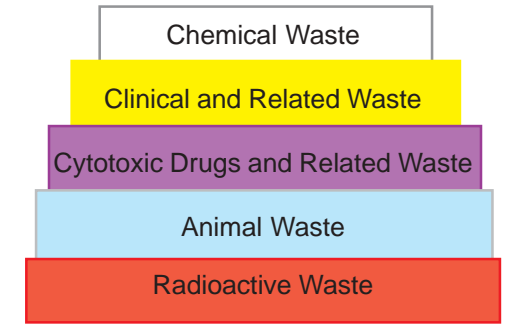


Clinical and Related Wastes

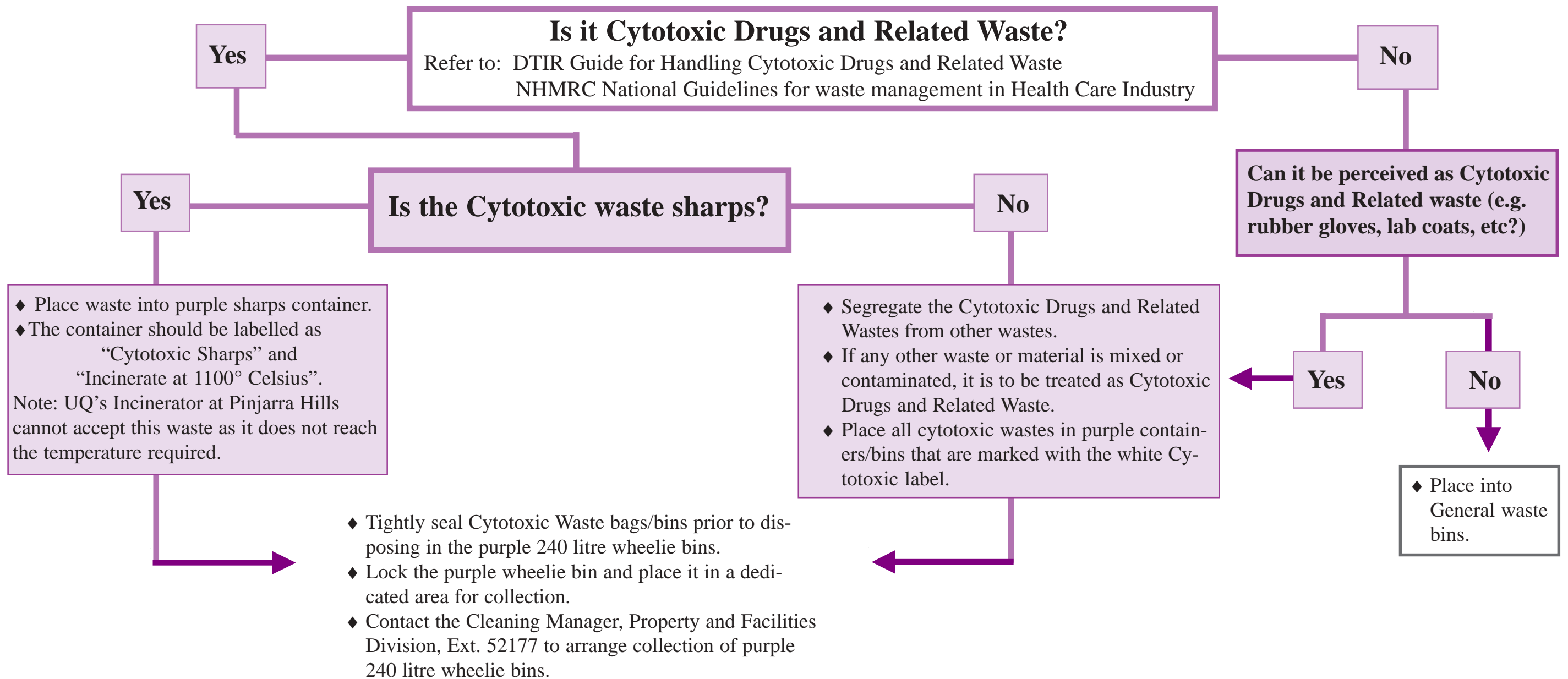


Tip Note down your waste disposal methods at the same time as your risk assessment details.

Environmental Management System (EMS)
Guide to Laboratory Waste Disposal



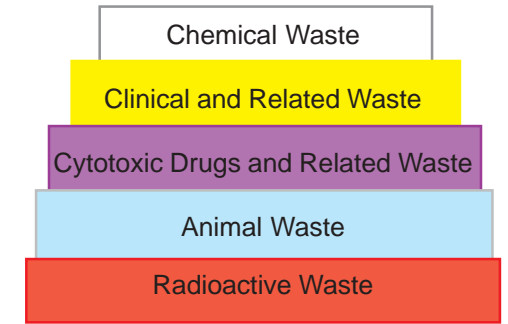
Cytotoxic Drugs and Related Waste



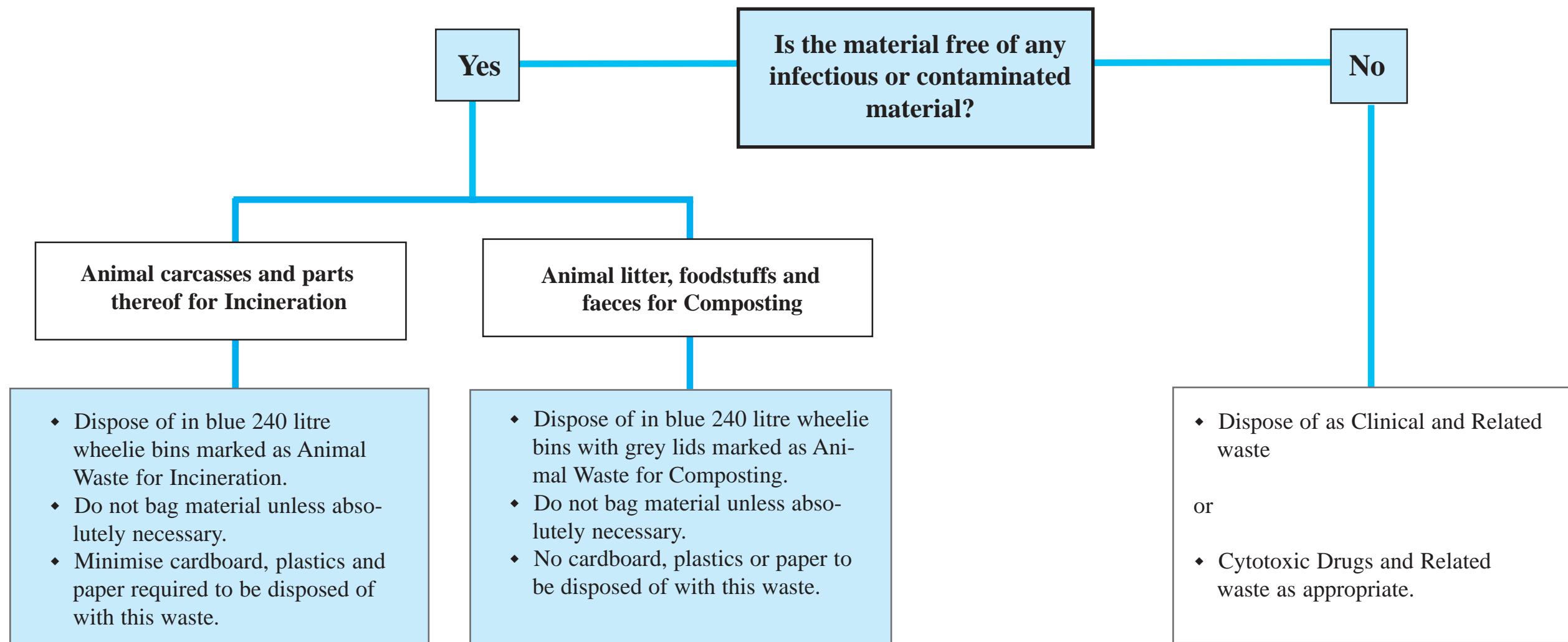
Tip

Note down your waste disposal methods at the same time as your risk assessment details.

Environmental Management System (EMS)
Guide to Laboratory Waste Disposal



Animal Waste



Tip

Note down your waste disposal methods at the same time as your risk assessment details.

Environmental Management System (EMS) Guide to Laboratory Waste Disposal

