

Environmental Management System (EMS)
Guide to Laboratory and Animal Waste Disposal - Gatton campus

Chemicals
Clinical and Related (Path)
Cytotoxic Drugs and Related
Animal Waste
Radioactive

Tip ...

Note down your waste disposal methods at the same time as your risk assessment details.

Are the contents of the waste known?

No

Refer to EMS Manual or talk to your Supervisor.

EMS Website: www.pf.uq.edu.au/ems.html

Yes

Is the chemical or waste dangerous to handle in its current state?

Consider:

1. Will it react violently if in contact with air, water or moisture?
2. Will it explode/react if dropped?
3. Is the current packaging damaged?

Yes

No

There is no defined procedure for these types of waste. Each waste must be addressed on an individual basis.

- ◆ Refer to <http://hazsafety.pf.uq.edu.au/chemwaste/index.html> and/or
- ◆ Consult MSDS information for this chemical waste.
- ◆ Follow MSDS directions for correct disposal of waste.
- ◆ In addition to any other information given in MSDS, waste must also be handled as follows:
 1. Packaging labelled with appropriate dangerous goods diamond.
 2. Contents and concentration listed.
 3. Name of person and generating department listed.

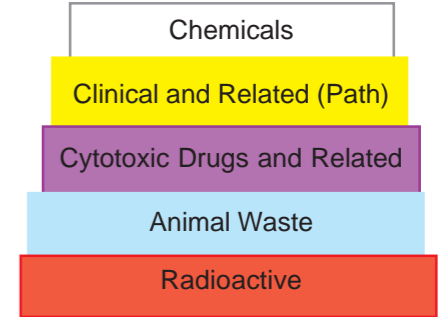
For further information, email Chemical Store Manager at: chemwaste@uq.edu.au

Select from the waste categories on Page 2:

- ◆ Chemical Waste
- ◆ Clinical and Related Waste
- ◆ Cytotoxic Drugs and Related Waste
- ◆ Animal Waste
- ◆ Radioactive Waste.

For General Waste and Recycling procedures, refer to website above.

Environmental Management System (EMS)
Guide to Laboratory and Animal Waste Disposal - Gatton campus



Waste Streams

Chemical Waste

Any waste of a chemical nature that has the potential to pose a chemical threat to health, safety and/or the environment, or is chemically hazardous.

Scope:

- ◆ Sewerable chemicals
- ◆ Inert solids
- ◆ Collection of non-sewerable liquid wastes
- ◆ Collection of non-sewerable solid wastes
- ◆ Labelling chemical wastes
- ◆ Waste Manifests
- ◆ Collection procedures
- ◆ Common wastes in the work area.

Examples:

Clinical and Related (Path) Waste

Waste of an infectious or contaminated nature. Pathological substances are substances that act as a source, host or carrier of disease.

Scope:

- ◆ Clinical wastes
- ◆ Any disposable laboratory consumables that may be contaminated by Clinical wastes
- ◆ Sharps
- ◆ Pharmaceuticals
- ◆ Fixed tissue and histology sections
- ◆ Animal carcasses and cage linings only if they are infectious or contaminated.
- ◆ Infectious or contaminated faeces.

Examples:

Cytotoxic Drugs and Related Waste

Cytotoxic waste is material that is, or may be, contaminated with a cytotoxic drug during the preparation, transport or administration of chemotherapy. Cytotoxic drugs are toxic compounds known to have carcinogenic, mutagenic and/or teratogenic potential.

Scope:

- ◆ Cytotoxic drugs and related waste
- ◆ Any disposable laboratory consumables that may have become contaminated
- ◆ Contaminated sharps and pharmaceuticals
- ◆ Animal carcasses and cage linings only if they are contaminated.

Examples:

Animal Waste

Animal Waste of a biological nature that has the potential to cause harm by acting as a pathological waste while undergoing decomposition.

Scope:

- ◆ Animal carcasses, limbs and tissue that are not infectious or contaminated.
- ◆ Used animal litter and food-stuffs that are not infectious or contaminated.
- ◆ Faeces that are not infectious or contaminated..

Examples:

Radioactive Waste

Wastes which because of their radioactive content may require specific management arrangement.

Scope:

- ◆ Solvent-based liquid scintillants
- ◆ Water-based liquid scintillants
- ◆ Radioactive glass and vials
- ◆ Dry materials (including contaminated clothing)
- ◆ Chemical reagents.

Examples:

Environmental Management System (EMS)
Guide to Laboratory and Animal Waste Disposal - Gatton campus

Chemicals
Clinical and Related (Path)
Cytotoxic Drugs and Related
Animal Waste
Radioactive

Chemical Waste

Is it liquid?

Yes

No

Is it sewerable?

Check with BCC Guidelines (they meet the requirements of the Gatton Sewage Treatment Plant) at: <http://hazsafety.pf.uq.edu.au/chemwaste/index.html> and/or check with your Supervisor and/or risk assessment details.

Yes

No

Is it sewerable?

Check with BCC Guidelines (they meet the requirements of the Gatton Sewage Treatment Plant) at: <http://hazsafety.pf.uq.edu.au/chemwaste/index.html> and/or check with your Supervisor and/or risk assessment details.

Yes

No

- ◆ Waste must be miscible (soluble) with water.
- ◆ Waste must not be TOXIC (DG 6) or hazardous to aquatic, marine and terrestrial life and environments (Refer to MSDS).
- ◆ Acceptable flammable liquids (DG3) must be less than 10% of their explosive concentrations (Refer to MSDS).
- ◆ Acids and alkalis will be diluted to between pH6 and pH9.
- ◆ Chemicals must not be hazardous to sewage plant operators, especially in confined spaces, or the plant.

- ◆ Email University Chemical Store to request containers at: chemwaste@uq.edu.au
- ◆ Check container has appropriate label printed and attached.
- ◆ Ensure only one 'individually generated' waste is placed in each container.
- ◆ **Print in pencil** on the label:
 1. Concentration of each ingredient.
 2. Generator's name, phone number and department.
 3. Storage and handling obligations.
 4. Date.
- ◆ Email the Chemical Store to arrange collection of waste at: chemwaste@uq.edu.au
- ◆ Place waste containers in Storeroom 116, Plant Industries Building No. 8111 for collection (every 2nd Friday).

Specific Examples

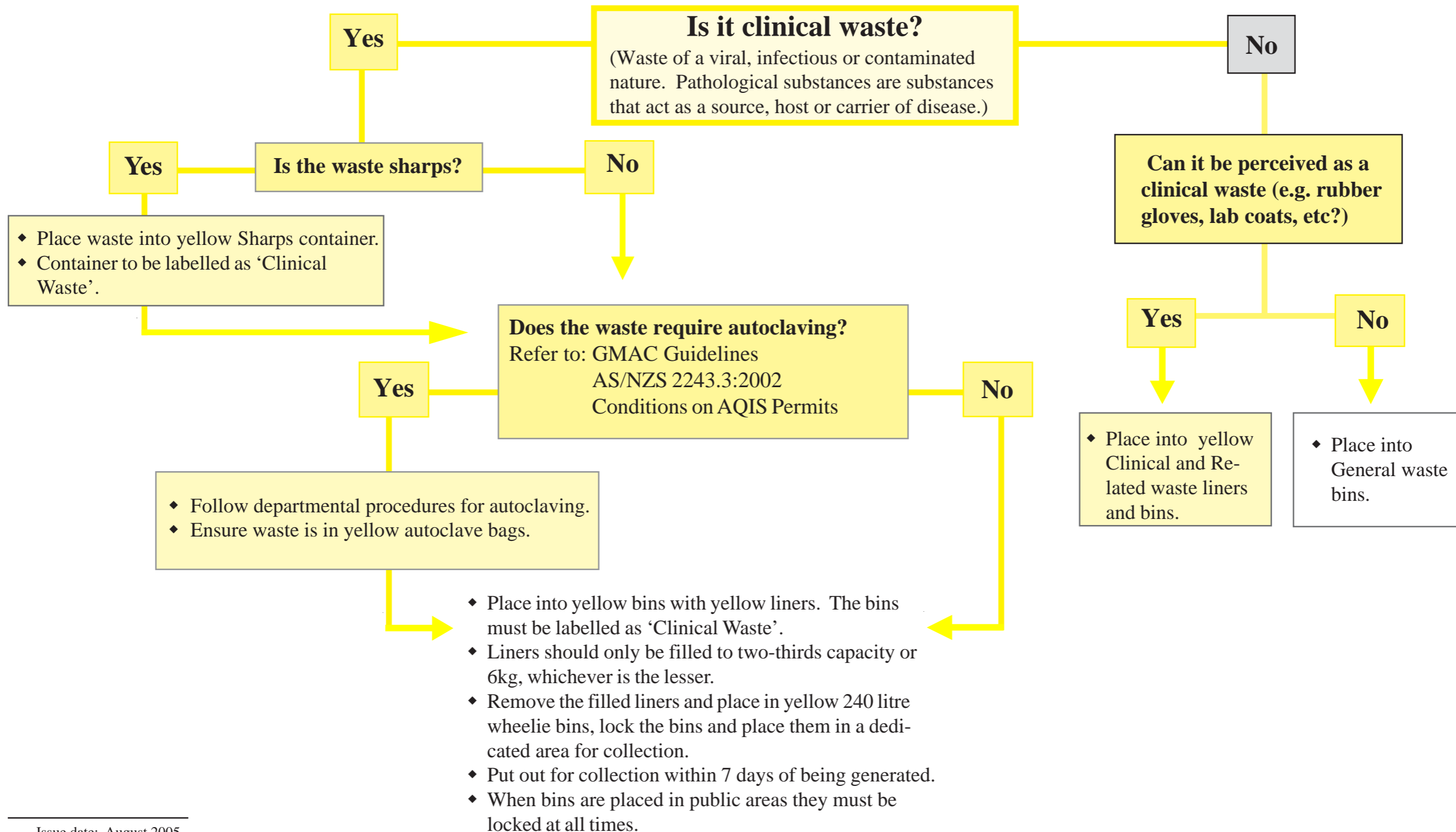
- ◆ Waste must be miscible (soluble) with water.
- ◆ Waste must not be TOXIC (DG 6) or hazardous to aquatic, marine and terrestrial life and environments (Refer to MSDS).
- ◆ Acceptable flammable liquids (DG3) must be less than 10% of their explosive concentrations (Refer to MSDS).
- ◆ Acids and alkalis will be diluted to between pH6 and pH9.
- ◆ Chemicals must not be hazardous to sewage plant operators, especially in confined spaces, or the plant.

- ◆ Package waste in appropriate and suitable container.
- ◆ All packaging should be labelled with:
 1. Concentration of each ingredient.
 2. Generator's name, phone number and department.
 3. Storage and handling obligations.
 4. Date.
 5. Dangerous goods diamonds.
- ◆ Email University Chemical Store to arrange collection of waste at: chemwaste@uq.edu.au
- ◆ Place waste containers in Storeroom 116, Plant Industries Building No. 8111 for collection (every 2nd Friday).

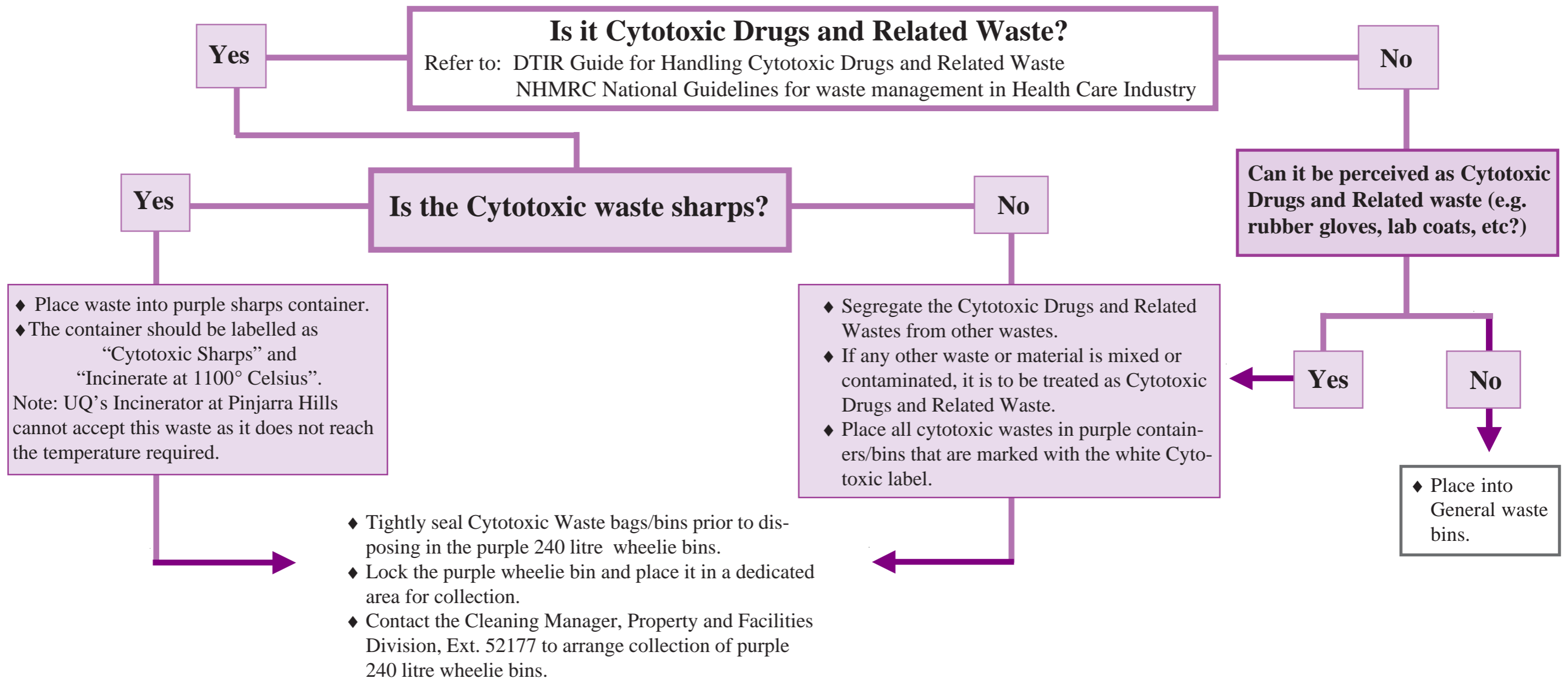
Specific examples

Specific examples

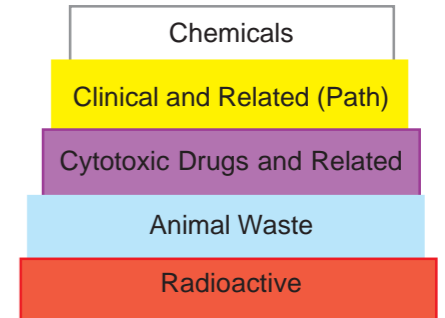
Clinical and Related Wastes



Cytotoxic Drugs and Related Waste



Environmental Management System (EMS)
Guide to Laboratory and Animal Waste Disposal - Gatton campus



Animal Waste

Yes

Is the material free of any infectious or contaminated material?

No

- Dispose of as Clinical and Related waste; or
- Cytotoxic Drugs and Related waste as appropriate.

Storage of Carcasses

- Animal carcasses should be placed in blue 240 litre wheelie bins marked with the Animal Waste for Incineration sticker.

Storage areas for carcasses

- Animal House (No. 8104) - Cold Room
- John Mahon Building 2 (No. 8106) - Cold Room
- Refrigerated store, located at the rear of the Piggery. Note: This area can only be used on an emergency basis during 2007. Contact Mark Bauer, Piggery Manager, Ext. 50413

Disposal of animal carcasses and parts thereof

Pinjarra Hills Incinerator

- Collected weekly - Tuesdays at 8am, plus callouts as required.
- Animal House and John Mahon Building waste bins are to be placed on loading docks prior to 8am on Tuesdays.
- Where possible, place whole carcasses in the 240ltr blue wheelie bins.
- Remove all animal ear tags and collars.
- Incinerator Operators: Mbl: 0401 716993 or 0401 717233

External Facilities - Landfill

- Contact Laidley Shire Council for details on what can be disposed of at these facilities (fees may apply)
Ph: (07) 54 668888

Animal Litter, Foodstuffs and Faeces

- Place Animal litter, foodstuff's and faeces into 240 ltr wheelie bins marked as 'General Waste' and store in a cool environment.
- Place out for General Waste collection.

