



PROPERTY PRESS

from the director

edition 61 – february 2008

Recently, at home, I lay beneath a table in a state of negligible attire desperately trying to reduce my body temperature while it hit 40 degrees outside. The state of physical inertia allowed me to contemplate recent events. The drought has broken and my neighbour's water tanks have filled and settled with a precarious list. Before Christmas, my wife embarked on a four week holiday overseas on the day of the Federal election. As the animals of the forest will always remember where they were when Bambi's mother was shot, she will always recall that she was at Singapore Airport when Howard conceded victory, and I will always remember February 13th of this year as a noble day.

My wife met up with our son in India and whenever I phoned her, they always seemed to be passengers in a car. As we talked, I found it quite terrifying listening to the screech of brakes, the roar of engines, the bellow of horns and my terrified son's yelps in the background. During one call, all this stopped and it suddenly became quiet. 'What's happened?' I asked.

'Oh, there's a cow on the road,' she replied, 'they're sacred, you know, and have right of way, so we have all stopped'.

They both returned home in time for Christmas, a festival I particularly enjoy in sunny Australia because my most memorable Christmas celebration took place in the desert in the Middle East twenty four years ago. Singing carols in a natural rock amphitheatre beneath the deep blue sky with its myriad of stars was a wonderful experience. Being a bit of a pantheist at heart, within such a magical setting I was able to relate to the story of the shepherds, the three wise men and the wonderment of the birth of a child. This Christmas, however, the Archbishop of Canterbury advised that the story of the three wise men is just a legend. There you go, the certainty with which the clergy speak.

I was born into a family that belonged to the Christian faith but now I ascribe to few of their dicta. To me, they hardly seem to be equitable in their attitude towards women within their own church or to anybody from any other religion.

Maybe I'm missing something. Therefore I wasn't that keen to go to the wedding ceremony of a couple of Chinese friends who are Roman Catholics. It was around the time that ABC was airing 'Jihad Sheilas'.

It was a wonderful day and at the reception the Groom thanked us all for coming, including those who he considered his 'mentors' – those who had assisted him in assimilating his family's Chinese culture with that of the country where he had been born: Australia. A number of us were quite surprised by this and I felt quite ashamed. Yes, it's easy to take it all for granted. Although I am Scots Irish etc., I recalled that it wasn't all plain sailing when I landed with my family in a foreign land, Australia, twenty years ago. What indeed must it be like for people from other countries?

At the start of this new semester, I look around the campus and see all the students. It's a new world for a lot of them. I believe I am tolerant but I believe I could be more respectful of other people's cultures and beliefs. The old adage 'peace and goodwill' seems particularly relevant these days. Oh yes, I have also given up following the cricket! ~ Alasdair McClintock, Director, Property & Facilities Division

did you know about the... intercampus bus service

P&F manages an intercampus bus service which runs between the St Lucia, Ipswich and Gatton campuses.

The bus departs from the St Lucia and Gatton campuses daily at 6:15am, 8:00am, 1:20pm, 4:20pm – Monday to Friday (excluding State public holidays).

The bus departs from the Ipswich campus daily at 7:00am, 8:45am, 2:05pm, 5:05pm – Monday to Friday (excluding State public holidays).

Tickets for the intercampus bus are available from the Book Shop and the Student Centre (St Lucia and UQ Ipswich campuses), and from the Bookshop and Post Office/Cashier (UQ Gatton).

The cost is:

\$7 for travel between St Lucia and Gatton campuses;

\$3.50 for travel between Ipswich to either St Lucia or Gatton campuses;

\$2 for travel from any intermediate stop to the next closest campus.

The Intercampus Bus Timetable is available at: www.pf.uq.edu.au/buses.html

in this issue

| | |
|--|-----------|
| From the Director | Page 1 |
| Intercampus Bus Service | Page 1 |
| Engineering News – GreenPower to go! | Page 2 |
| UniGrounds | Page 2 |
| Security News | Page 3 |
| Fire News – Evacuations | Page 3 |
| Campus Construction | Pages 3-6 |
| Integrated Management System – IMS | Page 6 |
| Farewell to V-C | Page 7 |
| Safety Management System – SMS | Page 7 |
| Environmental Management at UQ | Page 8-9 |
| Fuel Offsets with Greenfleet | Page 10 |
| Staff Profile – Gatton Building Trades | Page 10 |
| Staff Profile – Gatton Mechanical Trades | Page 11 |
| Staff Profile – Gatton Electrical Trades | Page 11 |
| Top-10 Maintenance Projects List | Page 12 |
| Natter Box – P&F Hot Goss | Page 12 |



engineering news –GreenPower to go!

The University is now purchasing electricity from renewable energy sources. This initiative is part of an ongoing commitment by the University to reduce its ecological footprint and encourage environmentally sustainable practice throughout the community. The University has signed up to use 2.5% GreenPower, which is a member of The National Green Power Accreditation Program.

This initial purchase will reduce University greenhouse gas emissions by a huge 3,400 tonnes of CO₂ this year. That is enough to run about 580 homes every month. The switch to GreenPower means that UQ is contributing to the development of new renewable energy generation through its buying behaviour as well as our leading-edge research.

~ Stewart Hobbs, Engineering Manager

The University of Queensland
powered by



uni grounds

It was great to return from the Christmas break and see the campus thriving. With more than 250mm of rainfall on campus this year, it is the best it has looked in several years. We have only used our recycled irrigation system for two days and our tankers have been used only for the gardens that receive minimal rain. This has been good for grounds staff, who have literally hit the ground running this year. An area that has really benefited from this rain is the Great Court. We have received several comments on its condition – from our point of view it is great that the centrepiece of the University is looking this way as it has been in very poor condition over the last couple of years. Andrew Bird is the new court keeper and will have his time cut out with the mowing. With all the rain our newly appointed irrigation technician, Brett Meehan, has been showing his diversity. With only periodic maintenance checks required on the system, Brett has been assisting with tree works and plantings around campus (*right*) – he has always believed he was good on a shovel.

The ovals are ready for the return of clubs for the season. Last year we were really pleased with the way the fields held up during the hectic season. Since renovations in September last year, most fields have had a well-deserved rest. We have applied a very substantial fertilising and soil amendment program over the off season which, at present, has the fields in the best condition they have been in, before the clubs return. The rain has also contributed to their condition as all fields have had 100% coverage.

One project that we had completed early in the New Year was new seating at the Medical School Herston (*below*). Last year we were approached by staff from the School to install some seating to replace the old concrete seats scattered around the site. We have installed five table and chair combinations and five pedestal seats. One table and three seats are located at the back of the Public Health Building, with four tables and two seats located under the trees in the front lawn of the site. We hope staff and students enjoy the new seating.

~ Shane Biddle, Senior Supervisor Grounds



did you know ...

You can view all editions of *Property Press* at www.pf.uq.edu.au/pubs.html

security news

In times of emergency within the University community, Security Section is there to assist you 24 hours a day, 365 days a year. Such emergencies include: medical emergency, fire, chemical and environment spills, explosions, bomb threats, and any other serious events, such as a crime in progress. The response that Security provides to all types of emergencies is an integral part of our tried-and-tested procedures that ensure a positive outcome.

Security encourages all University staff and students, on all

sites including off-campus sites such as research stations, to program the emergency number into both their mobile and desk phones – 3365 3333. This allows Security to provide a measured and coordinated response, involving all necessary external emergency services such as, Police, Fire and Ambulance.

The University has recently developed the Crisis Management and Recovery Plan (CMRP), to provide effective short and long-term response to an incident, which can affect the ongoing operation of the campus

involved, and is aimed at returning stability as quickly as possible. The CMRP has been designed to work in a way that will protect all University life and property in the event of a critical event – the plan is available from the [UQ OH&S website – www.uq.edu.au/ohs](http://www.uq.edu.au/ohs).

If something seems out of place or concerns you, play it safe, make the call and get it checked out. With your help, Security can continue to ensure that our environment is a safe and secure place to work and study.

~ Paul Cantarella, acting Security Supervisor
& Ian Chambers, Security Officer

fire news – evacuations

An evacuation drill was conducted on 18 January in the Joyce Ackroyd building. The 6-storey building housed 500 to 600 occupants at the time of the evacuation which took five minutes to complete, including a trip to level 5 to help evacuate a disabled person as per the buildings Emergency Control Organisations (ECO) evacuation procedures. Security also assisted in directing the evacuees to the assembly area as they left the building keeping the egress paths clear. This is an excellent timeframe for an evacuation of a 6-storey building. The Fire Wardens are to be congratulated for a job well done – it shows what can be achieved when people work together.

What if the Wardens had to evacuate some or all of the buildings in that precinct? Would the evacuation run smoothly? A plan for a complete or partial campus evacuation will be released in February. This will show the

12 Disaster Assembly Areas around the St Lucia campus. There will also be plans for Gatton and Ipswich.

In an emergency where more than one building has to be evacuated Wardens will evacuate a building as per normal ECO procedures, and occupants will assemble at their normal assembly area. From the building assembly area occupants will be directed to safer Disaster Assembly Areas designed to cater for larger crowds.

How can you as a staff member help in an evacuation? ... by knowing the buildings emergency and evacuation procedures and following the directions of Assembly Area Wardens, Security Officers and Emergency Services Personnel.

I hope everyone has a happy and safe New Year.

~ Steve McCann Fire Safety Officer

campus construction

ALUMNI COURT

The Alumni Court Campus Enhancement Project (*below*) will be completed by the end of March, with work on the Parnell carpark to be undertaken throughout March and April.

~ Kevin O'Sullivan, Maintenance Manager Contracts

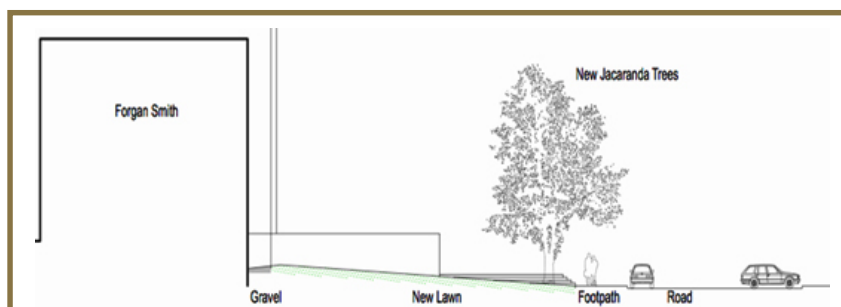


campus construction

FORGAN SMITH FORECOURT LANDSCAPE UPGRADE

From 25 February work will commence on the Forgan Smith Forecourt Landscape upgrade (*right*). This work will involve the removal of some existing trees and planting against the Forgan Smith building as well as the establishment of additional trees away from the building. The area will have an irrigation system installed, and additional seating and lighting upgraded. The project is due to be completed by the end of June 2008.

~ Kevin O'Sullivan,
Maintenance Manager Contracts



RURAL CLINICAL BUILDING TOOWOOMBA

The Rural Clinical building at Toowoomba was completed in December (*left*).

The first rotation of medical students are now undertaking clinical classes in the teaching rooms and laboratory. Staff are pleased to have a permanent home within the Hospital precinct.

The team of Arkhefield (architects) and McNab Constructions created this new learning environment.

~ Robyn McDougall,
Construction Project Manager

Photography by Alasdair McClintock



did you know... p&f bulletin board

You can view shutdown, construction & road closure notices at www.pf.uq.edu.au/bb.html

campus construction

CAMPUS SEATING

The project to install seating in the following areas is currently underway: Alumni Court – nearing completion (*see page 3*); Prentice Court – completion expected late March; and Campbell Place – stage 1 completion expected late February.

~ Chris Abbot, Operations Project Officer



Prentice Court: old fountain (above); cleared site (above right); new trees (right)



Above & right: Campbell Place seating



IPSWICH CROSSING & SPEED CONTROLS

Construction at Ipswich of the new crossing and speed controls is almost complete (*left*). The raised crossings, with new lighting and line markings, will provide a safer option for pedestrians and be more visible to drivers.

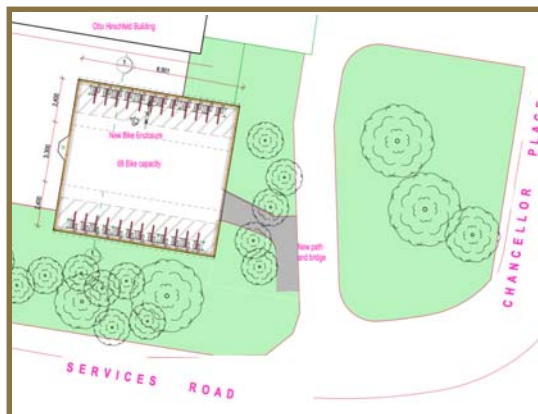
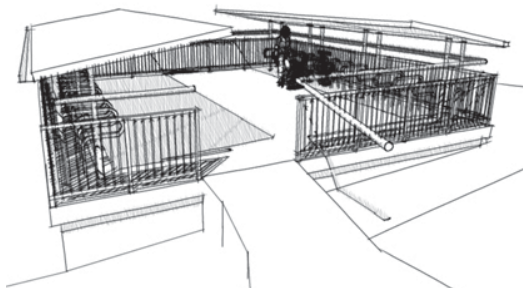
~ Chris Abbot,
Operations Project Officer

campus construction

BICYCLE STORAGE OTTO HIRSCHFELD BLDG

The plant room roof, beside Otto Hirschfeld Building, will be the site of the proposed bicycle storage area (right & below). This facility will hold up to 68 bikes and will have 24-hour CCTV coverage. Construction is due to start late March early April.

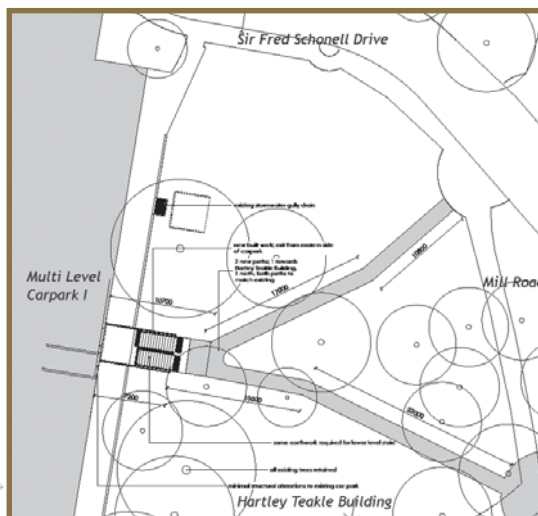
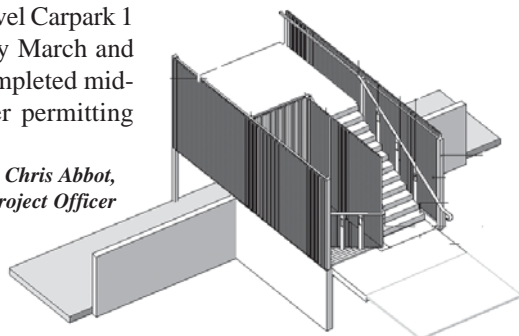
~ Chris Abbot, Operations Projects Officer



MULTI-LEVEL CARPARK I

Construction for improving access to levels 1 and 2 of the eastern side of Multi-level Carpark I will commence early March and is expected to be completed mid-to-late May, weather permitting (sketches right).

~ Chris Abbot,
Operations Project Officer



integrated management system (ims) – do you use one?

If you have a workplace mission statement, defined targets and objectives to achieve, procedures for work tasks and your products and services are routinely checked to ensure they to a set standard, then it is likely you use one (or many of its key elements)... a Quality Management System (QMS), that is. To understand what is involved in quality management, the what, when and why of such a system need to be explained.

What? – Widely utilised as a strategic business tool, a QMS enables organisations, institutions and small operators alike to put in place a set of practices to facilitate the identification of customer requirements (e.g. surveys), control the delivery of products and services to meet these requirements (e.g. documented procedures), measure and assess performance (e.g. Key Performance Indicators), and continuously improve upon these products and services (e.g. audit findings).

When? – A QMS supports the functions of a business on a daily basis. A QMS can be incorporated into the areas of finance, human resources, health and safety, services and administration (to name just a few), and is utilised routinely by all levels of business – from management (e.g. strategic reviews) through to newly appointed team members (induction training).

Why? – Through the analysis of customer requirements and the monitoring of product/service performance and management reviews, system improvements can be initiated to further strengthen business and support informed future planning. In addition, those businesses with QMS certification are easily identified by customers as being committed to meeting and maintaining service standards and customer satisfaction.

Here at the Property and Facilities Division we see the value of

operating within a Quality Management System, and have been certified against the international standard, ISO9001:2000, for the past 12 years. For us it provides a framework to help our Division fulfil our customer's service requirements, enhance customer satisfaction and pursue continuous product/service improvement.

Please make use of the QMS Feedback System and forward any of your ideas or suggestions to your IMS Representative or the Quality Officer. Representatives for each section are as follows:

Engineering – Stephen Sandilands (EPO1),

Operations – Kate Harding (OC) & Mark Glindemann (MMGI),

Construction – Rhondda Connolly (CAS),

Services – Irene Charov (SMA1),

Admin and IT – Lisa Davis (QO).

~ Lisa Davis, Quality Officer

vc farewell

Professor John Hay AC, thanked staff from the P&F Division for their many contributions and support during his years as VC at UQ, at a morning tea in November 2007 (*below left*). Alasdair McClintock, Director P&F, commented that during this time Professor Hay's vision became a reality when UQ undertook a capital program like it had never done before. Alasdair said he made no excuse for calling them "the Hay Days" as that was what they were. Alasdair presented the VC (*below right*) with a 'scrapbook' of *The Hay Days UQ Projects 1996-2007* as a reflection of his time here.



safety management system – sms

This month, Gary Herle and I have decided to share his account of a life-changing accident. I have done this in the hope that we may all learn from it. For me, this accident shows the importance of examining the consequences side of the familiar risk equation: $Risk = Likelihood \times Consequence$. If Gary (*below*) had paid greater attention to where he would have landed in the event of a fall he may well have implemented additional control measures.

"It's been over three years and my perception of life has changed dramatically! Why? ... all because of an accident that shouldn't have happened. I was up a ladder, only 3 metres, there were three points of contact on the ladder, but the work (piping for an air conditioner) was at a stretch. The ladder, jammed at the base against a fence, parallel to the wall to be worked on, was at the correct angle. As an added precaution the apprentice was told to hold the ladder steady as well.

The accident. *For reasons we won't go into, the apprentice decided to leave his post. The ladder moved just slightly and I lost my balance. I was on my way to the ground. The fence was just a metre from the wall, so I pushed with all my might so as to avoid falling on it. I didn't.*

The result. *I landed on top of the pipe fence, broke my nose and my fingers, which were caught in the vertical chain wire of the fence. But the best, or should I say worst, is yet to come. Upon landing in the garden next door, I damaged my ankle on the concrete edge, and in the garden protruding vertically from the ground was a piece of timber. That's where the base of my neck landed, with a loud crack and heaps of pain. The result was a fractured C5 vertebra and an exploded disc which placed pressure on my spinal cord, causing me to have numbness in the left side of my body.*

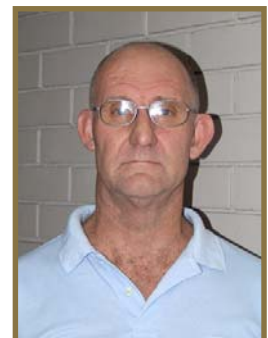
Recovery. *This proved to be painfully slow. The accident happened mid-December and a neck brace had to be worn 24hrs a day. A certain amount of healing had to happen to the vertebrae before I could be operated on for a spinal fusion. My left side was showing signs of wastage in the arm and leg, so the operation was organised for March. After this the slow process of healing began – 11months later I could go back to work, but only on light duties.*

I've been extremely fortunate in that I went back to normal life. But even after all this time I still exercise to strengthen my leg and arm. My attitude to life is much sunnier and every day is full of appreciation for what I have – my health. What I should have done at the outset on the job site is considered myself and got a work platform to work from."

~ Gary Herle, Plumbing Trades

I would also like to take this opportunity to remind everyone that they are required to sit the UQ OH&S online induction. A link is available from the P&F website home page, amongst others. There are prizes available, so chances are you may be well rewarded for your efforts.

~ Greg Brown, P&F Health & Safety Coordinator



MAKE A RESOLUTION FOR 2008 TO RECYCLE ALL THAT PAPER ...

In 2007, waste audits highlighted that we still have 20% of paper in our general waste going to landfill. At the beginning of the year we often clean out our files and offices and throw out a lot of paper. Let's make 2008 the year that we recycle all paper at UQ. Waste audits will be conducted later in the year and it would be great to see a significant reduction in paper going to landfill from our campuses. If you require additional bins email: recycle@pf.uq.edu.au In late 2007, a group of Green Office representatives visited the Visy Recycling facility in Brisbane (*below*). It highlighted that recyclable items are well utilised.

Close the loop and purchase paper with recycled content and other environmentally preferred products.

It is important not only to recycle your waste, but also to close the loop by buying products made from recycled waste. Remember if you are recycling paper, but not buying recycled-content paper, you are only doing half the job!

Environmental Services, in conjunction with stakeholders, has developed a *Green Purchasing Guide* to provide information about the environmental and health effects of the most commonly purchased products, how to make more informed decisions, and where the most preferable products can be sourced.

The UQ Central Store stocks a range of environmentally preferred products, including recycled paper, refillable and reusable pens and pencils, remanufactured toner cartridges, reusable envelopes, durable mugs, plates and cutlery and eco bags.

What you can do

- Take your durable mug to the coffee shops on campus and help to reduce the use of polystyrene and paper cups.
- Purchase environmentally preferred products at the UQ Central Store. View: www.pf.uq.edu.au/StoresCatalog.html
- Calculate the impacts of paper consumption in your office and the benefits of using less and/or recycled content paper at: www.environmentaldefense.org/papercalculator/
- Tips for purchasing environmentally preferred office equipment are listed in the Purchase Environmentally Preferred Office Equipment Poster at: www.pf.uq.edu.au/Ems/Grn_ProductsPstr.pdf



CLIMATE CHANGE – THE FACTS

In 2007, The Intergovernmental Panel on Climate Change published its Fourth Assessment Report. Scientific evidence overwhelmingly supports the theory that human activities have increased concentrations of greenhouse gases in the atmosphere, with a 70% increase of concentrations of CO₂ (carbon dioxide) & CH₄ (methane) from pre-industrial times to 2005. The predominant cause of CO₂ in the atmosphere is the burning of fossil fuels, while CH₄ emissions are primarily due to agriculture and fossil fuel use.

Facts: (From: *IPCC Fourth Assessment Report, climate Change 2007: Synthesis Report*)

- Eleven out of the past twelve years rank amongst the twelve warmest years on the instrumental record of global surface temperatures.

- Global average sea level rise since 1961 was 1.8mm/year, but since 1993 it is at 3.1mm/year.
- Satellite data since 1978 shows that annual average Arctic sea ice extent has shrunk by 2.7% per decade, with larger decreases in summer of 7.4% per decade.
- Up to at least 2020, Australian energy consumption is predicted to grow 2.1%/yr on average (ABARE, 2004).

According to the IPCC Report there are six key risks areas in Australia and New Zealand that will be impacted on. These are natural systems, water security, coastal communities, agriculture and forestry, major infrastructure and health. In the next issue of *Property Press* we will explore these impacts further. For more information on Climate Change refer to www.ipcc.ch/

The University now purchases 2.5% Green Energy for the St Lucia campus.

... continued next page...

GREEN BUILDINGS

During 2006, the Green Building Council of Australia (GBCAUS) started work on developing the Green Star Rating for Educational Facilities. Representatives of the Tertiary Education Facilities Management Association (TEFMA) provided professional advice during the process and the pilot rating tool was released in 2007 for public feedback. The feedback is now being reviewed and the final version of the tool should be available during 2008. According to The Green Building Council, “*The tool enables stakeholders to minimise the environmental impact of their developments and to capitalise on, and receive recognition for, their design initiatives.*” It will be relevant to primary, secondary, tertiary and higher education facilities owned privately or by government.

Property and Facilities Division subscribes to ecospecifier so that Project Officers and Managers can keep up to date with the availability of environmentally preferable building materials. The website contains a product database that is extensive and easy to navigate. You will also find fact sheets and publications for further information. Ecospecifier runs training courses on sustainable buildings and building materials throughout the year. Project Officers should contact Leigh Burgess to obtain a user name and password for access at l.burgess@pf.uq.edu.au.

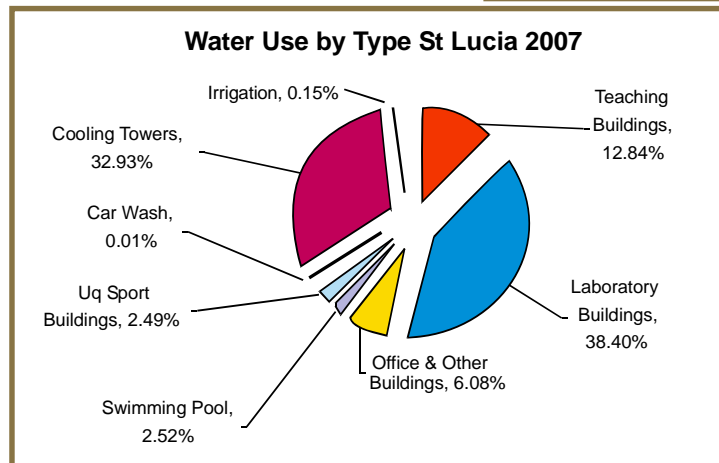
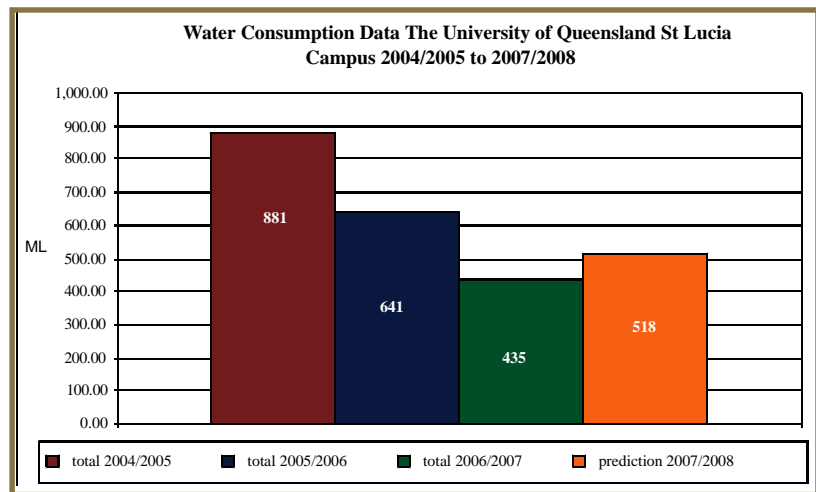


WATER

Water consumption decreased on campus in 2006/2007 (graph right), despite two new buildings being commissioned in the reporting period (i.e. AIBN & SMI).

In the next period two more buildings will come on line (GPN4 & QBI) and it is expected that total consumption will increase slightly.

The increase will be offset by continued retrofitting and implementation of water-saving opportunities in laboratories.



The St Lucia campus now has in excess of 160 water meters measuring building and cooling tower consumption. Using this data, water consumed by end use has been calculated and can be seen in the graph (left). Laboratory buildings are the largest consumer of water, closely followed by cooling towers.

WATER TANKS

General Purpose North 4 is the first new building on campus to have water tanks reticulated to the toilets. This is expected to save around 2ML a year. Property & Facilities will be monitoring the buildings consumption to see how it compares to other buildings of similar use.

REPORTING

Reporting requirements for water have increased in 2008, and the University is now required to report quarterly on all actions outlined in each of the five Water Efficiency Management Plans submitted to Councils. Cooling towers are also required to be reported on quarterly.

~ Environmental team – Stuart Green, Leigh Burgess, Kay Ollett, & Stephanie Butler

UQ offsets total fuel consumption with Greenfleet

The Transport Section is delighted to announce a major upgrading of the carbon offset scheme developed by the Greenfleet organisation. Since 2004 Greenfleet have offset the fuel-burn emissions of the UQ pool and P&F vehicle fleet, via an individual subscription for each vehicle. In 2008 this subscription will be expanded to encompass the total plant and vehicle fleet held by the University – which includes departmental and executive vehicles and petrol used in all plant and equipment (e.g. tractors, mowers, generators).

The emissions from the total fuel burn annually average 1780 tonnes of CO₂ – requiring 6640 trees to be planted annually as a carbon sink over their lifetime. These trees create permanent native forests that absorb emissions, provide habitat for wildlife, improve water and soil quality, tackle salinity and reduce erosion. Greenfleet secures the plantings on each site via legally binding agreements, whether it is privately owned land or National Park.



After meeting with their representatives, CEO Sarah Gipton and Forester Brendan Vollemaere, P&F Services Section staff were impressed with the knowledge and commitment shown to the task of operating this not-for-profit organisation. We are very happy to return to the University fleet this carbon offset process and are confident that it will prove a great investment in the future health of our natural environment. For more information on Greenfleet, visit www.greenfleet.com.au

~ John Graham, University Vehicle Booking Officer

staff profile – operations – gatton building trades

The Gatton Building Trade Section, led by Nev McKay, is the largest P&F Operations section at Gatton. It has a diverse portfolio of responsibilities for the maintenance of buildings and infrastructure. Due to this fact its team members are generally those most frequently seen by our customers about campus. The various trades covered include plumbing, carpentry and painting.

This, however, does not provide a complete picture of what they actually do. For example, the carpentry team of Les Quade, Warren Gelhaar and Paul Kilah in their maintenance role look after far more than actually working with timber – undertaking tasks involving floor coverings, flyscreens, locks, tiling, whiteboards and pinboards, repairs to built-in furniture – to mention just a few.

The plumbers maintain: a reticulated potable water supply to ensure that everyone on campus has access to safe and reliable drinking water; the effluent drainage, including toilets, cisterns and sewers to protect our health by providing quality sanitary facilities; stormwater drainage; and, importantly, our roofs – to keep water out of our buildings. It should be noted that the plumbers Lionel Burchman and Mark Luther have put in a big effort in saving water wherever possible during the drought and the low dam levels.

There is only one maintenance painter at Gatton, Phil Broomhall, who primarily undertakes maintenance painting for the campus. When required, contractors are called in for larger tasks such as a total building repaint. Phil also undertakes numerous other tasks including glazing, painting items that have been fabricated in-house for customers, and refinishing furniture. He also performs the role of P&F Operations WH&S Officer at Gatton in addition to his other duties.

To support the tradesmen there is one trades assistant, Pat Topp, who undertakes a wide variety of important support services for each of the trades, such as plant operator and scaffolder.

Nev's team also supports the training of apprentices. To that end we currently have one mature-aged plumbing apprentice, Graham Ost and one painting apprentice, Brett Jolley.



~ Mark Glindermann, Maintenance Manager, Gatton/Ipswich

Section Photo (left to right): Paul Kilah (carpenter); Warren Gelhaar (carpenter); Mark Luther (plumber); Pat Topp (trades assistant); Lionel Burchman (plumber); Les Quade (carpenter); Nev McKay (Gatton Supervisor Building); and Graham Ost (apprentice plumber). Inset: Brett Jolley (apprentice painter); Phil Broomhall (painter).

staff profile – operations – gatton mechanical trades

Unlike St Lucia, the Gatton Mechanical Section has little to do with air-conditioning. Its focus is the provision of metal fabrication, pump maintenance and the operation of the Gatton campus sewerage treatment plant under the stewardship of Ian Watson, Gatton Supervisor Mechanical.

If it involves steel, Michael Broomfield, as boilermaker, is probably the person one wants. He looks after the maintenance of farm machinery and dabbles in blacksmithing work so that cutting points can till the earth efficiently and as designed. His role is an important one on the Gatton campus, which is largely farm-based, as it enables rapid-response repairs to farm machinery and equipment. When breakages occur, one cannot wait when it involves the welfare of animals or getting a crop harvested – it needs immediate attention. He also fabricates many one-off items, mainly for the Schools of Animal Studies and Veterinary Science, for teaching and research aids. Having him on the spot allows for developmental modifications to be made to equipment without the cost becoming excessive. Eddie Burrige assists Michael in delivering his products to the campus.

Another critical item for us all is water – something that the recent drought has raised in the collective consciousness as this resource becomes increasingly scarce. Ian's team looks after the maintenance of all of the bores, ring tanks and pumps on campus. It is not only irrigation water but our potable water, supply involving a 4 megalitre reservoir, mains, pumping station, and a water tower so that the campus population has a safe and secure drinking water supply.

At the end of this cycle this Section also maintains and operates a sewerage treatment plant that dates from the 1940s, when Gatton campus was seconded as a field hospital for the US military for the war effort. This plant is operated, under an authority from the Environment Protection Agency, to strict guidelines to ensure that there are no environmental releases that may cause harm. Garry Fischer, the sewerage treatment operator, runs this plant with assistance from Neil Kawjewski, so that its final effluent is of a very high standard

~ Mark Glindermann,
Maintenance Manager, Gatton/Ipswich

Section Photo (left to right): Ian Watson, Garry Fischer, Eddie Burrige, Neil Kawjewski, Michael Broomfield.



staff profile – operations – gatton electrical trades

A steady and reliable flow of electricity to the Gatton campus is maintained by the Gatton Electrical Section. Mark Thompson, Gatton Supervisor Electrical, oversees the maintenance of the electrical system from our Energex metering point to the various users. This is achieved by a mix of in-house staff, electricians Nathan O'Brien and Eddie Vievers, and contractors.

The electrical section provides a range of services to ensure that when you turn a switch on it has a safe and reliable power supply. These include: high voltage maintenance; transformer maintenance; pole inspections and maintenance; 240 volt system maintenance; RCD (residual current device) testing and servicing to ensure that they work to Australian Standards and, importantly, protect users from being electrocuted; lighting systems so that users have an acceptable level of lighting in the workplace; and annual thermoscan of the electrical system to detect potential problems so they may be attended to before a problem occurs.



An important part of the Gatton Electrical section's work is to undertake first-in fault response to air conditioning and refrigeration issues. The electrical section also undertakes work for the various schools as requested, such as testing and tagging or repairing equipment, and temporary power supply for Open Days and other events. Unlike UQ's other campuses, Gatton has extensive overhead power lines that require an annual check of all lines to ensure that trees have not grown too close to them creating a potential earthing. ~ Mark Glindermann, Maintenance Manager, Gatton/Ipswich

Section Photo (left to right): Eddie Vievers; Nathan O'Brien and Mark Thompson.

did you know ...

Staff can view the P&F policies and procedures at www.pf.uq.edu.au/policy-procedures.html

maintenance projects

“TOP-10” MAINTENANCE PROJECTS LIST – 2008

| Building/Project | Job Description | Project Manager | Project Cost |
|--------------------------------|---------------------------------|-----------------|--------------|
| 1 Edith Cavell | External repairs & maintenance | MMRS | \$1,100,000 |
| 2 Indooroopilly Mine | Various safety / security works | RSMS | \$900,000 |
| 3 Morrison Hall | Replace room / external R&M | OPO1 | \$500,000 |
| 4 Cement Box Theatre | Safety Upgrades | OPO3 | \$110,000 |
| 5 Gatton Campus | Various asbestos removals | OPO2 | \$100,000 |
| 6 Social Sciences / John Hines | Upgrade toilets | MMC | \$900,000 |
| 7 Chemistry | External façade repairs | CPM6 | \$1,400,000 |
| 8 Michie | Remove asbestos / waterproof | MMS | \$200,000 |
| 9 Physiology Lecture Theatre | Remove asbestos / waterproof | MMS | \$200,000 |
| 10 Molecular Biosciences | Safety access | OPO4 | \$100,000 |

CUSTOMER FEEDBACK IS VERY IMPORTANT TO US

If you would like to raise a work order or if you have an inquiry about your project or even the progress of your project, please contact the Works Control Centre via:

Phone: 52222

Fax: 51013

Email:
wcc@pf.uq.edu.au

Web/online work orders:
www2.pf.uq.edu.au/wcc

Project Manager Contacts – phone:

| | | | |
|------|-------------------------------------|------------------|-------|
| MMRS | Maintenance Manager Remote Sites | Ray Deller | 65512 |
| RSMS | Remote Sites Maintenance Supervisor | Peter Bridges | 65514 |
| MMC | Maintenance Manager Contracts | Kevin O’Sullivan | 52267 |
| MMS | Maintenance Manager St Lucia | Robin Jones | 59148 |
| OPO1 | Operations Projects Officer 1 | Craig Carlton | 50043 |
| OPO3 | Operations Projects Officer 3 | Chris Abbot | 67813 |
| OPO2 | Operations Projects Officer 2 | Sel Harch | 50434 |
| OPO4 | Operations Projects Officer 4 | Glenn Vickery | 69975 |
| CPM6 | Construction Project Manager 6 | Jeff Arnold | 53061 |

natter box – p&f hot goss ...

We welcome the following new staff: Ray Hockley (Security) and Clayton Mackenzie-Ross (Refrigeration Mechanic apprentice).

We congratulate the following staff on their promotions/transfers to permanent positions: Glenn Vickery (Ops Projects); Brett Meehan (Grounds); Nathan O’Brien (Elec Trades); Michael Malcolm & Joshua Parker (Security); Chris Witham, Julianne Buchmann, Dennis Williams, and Tesfu Ocbamarian (Services).

We farewell the following staff and wish them well: Helen Bettridge & Will Downes (Engineering); Mark Coade & Doug Murray (Trades); Barry Teis (intercampus courier); Kristy Treharne (Grounds); and Malcolm Michele (Mailroom).

Congratulations to Paul Smith (*below*), normally a pretty conservative kind of guy, who recently became entitled to



big note himself – he has now been a loyal employee at UQ for 40 years! Paul, you have many good friends here at UQ who know you and respect your enthusiasm, kindness, humour, as well as your knowledge, experience and leadership with the University Warehouse. Thanks Paul, from all of us.



Congratulations to Scott (IT) & Julie Garner (*left*) who are very proud parents with the birth of their daughter, Lily Michelle – born 20 December, weighing 6lb 11oz.

Farewell to Fieneke Iedema (*below*) a third-year student from the School



of Facility Management in The Netherlands. Fieneke completed a 5-month internship here in P&F,

from September 2007 through to February 2008. Part of her time was spent completing assignments that were allocated to her by her Dutch educational facility and part of her time was spent working on projects for Services and Operations Section, including Asbestos Contracts and Service Level Agreement with Traffic and Parking.

Last word ...

All editions of the *Property Press* are available online at www.pf.uq.edu.au/prop-press.html. Please email the editor if you wish to be included or removed from the hard-copy mailout listing. If you would prefer to receive the *Property Press* electronically, please email lgriffiths@pf.uq.edu.au to be added to the email listing.

Please forward comments to:
Lyn Griffiths (editor)
Quality & Web Administrator
Property & Facilities Division
The University of Queensland Qld 4072
Ph: 3365 1150
Fax: 3365 1900
Email: l.griffiths@pf.uq.edu.au
Website: www.pf.uq.edu.au

Staff can email Feedback Items to: *qwa* or *qo*